

## LIFELONG LEARNING PROGRAMME

### GRUNDTVIG Learning Partnership

# “FREE-IT: Foster Re-integration and Enhance Employability through Inmates Training”

## PROJECT MEETING No. 5, SLOVENIA

Report: **Meeting No. 5**

Place: **Ljubljana & Trebnje, Slovenia**

Date: **29 September – 2 October 2014**

People involved: **23**

PARTNER	NATIONALITY	NAME
Penitenciarul Ploiești	RO	1. Vasile Iulian Zotescu 2. Constantin Stan
Åsanevideregående skole, avd. Fossane	NO	3. Jarle Galdal 4. Hege Øvstegård 5. Magnus Andre Rokne 6. Geir Arne Hundvebakke
European Prison Education Association – Malta Branch	MT	7. Joseph Giordmaina
Vollzugsdirektion	AT	8. Andrea Moser-Riebinger 9. Nora Sigart 10. Horst Membier
Centre d'Iniciatives per a la Reinserció (CIRE)	ES	11. Gerard Estalella Erill 12. Maria del Carmen Calderon Fornos
Center za izobraževanje in kulturo Trebnje (CIK Trebnje)	SL	13. Barbara Jerovšek 14. Tanja Vrčkovnik
Knowl - Social Enterprise for Risk Groups Education and Lifelong Learning	EL	15. Aimilios Karamanlis
Rideout (Creative Arts for Rehabilitation)	UK	16. Saul Hewish
Cooperativa Sociale "Il Cerchio ONLUS"	IT	17. Federica Vianello 18. Giuliano Ravagnin
Consulmarc Sviluppo srl	IT	19. Marina Lucchetta 20. Giulia Dall'Igna 21. Paolo Da Re 22. Francesco Da Re 23. Riccardo Nardini

## DAY1: 30<sup>TH</sup> SEPTEMBER 2014

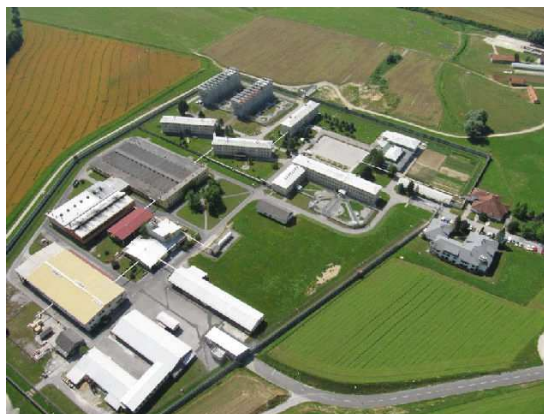
### 1. VISIT TO DOB PRISON

The participants visited the DOB prison (Zavod zaprestance kazniv zapora Dob) for men situated nearly 60 kilometers from Ljubljana. They were welcomed by Ms Mihaela Štukelj, head of education department, Mr Aleš Tibljaš, head of security guards, and Mr Tomaž Vesel, procurator of JMW Fire d.o.o.

The DOB prison is the largest institution in Slovenia where prison sentences are served by:

- legal age inmates from all judicial districts in the Republic of Slovenia, who are sentenced to a term of imprisonment exceeding one year and six months,
- young adults inmates (up to 23 years of age) from all the judicial districts of the Republic of Slovenia, who are sentenced to a term of imprisonment of more than five years.

Under the DOB prison operates 6 departments: 4 departments with 6 facilities (2 new, 4 old facilities) are situated in the closed regime, the semi-open unit "Slovenska vas" and open unit "Puščava" are dislocated. The closed unit has a capacity of 420 beds.





In year 2011, the closed unit of the DOB prison acquired two new facilities with a total capacity of 174 beds. Rooms are single and triple. Each of 2 new facilities has 69 single rooms and 6 triple

rooms. The new facilities are occupied by inmates who are spending their sentence in the closed regime; preference is given to those who work and/or are included in educational programmes.



Older facilities in the closed regime have rooms with a capacity of up to 8 beds, which are already overcrowded for several years now (up to 12 beds), each department also has a few small rooms and some single rooms.



**Semi-open unit “Slovenska vas”** is located right at the doorstep of the main prison with a closed regime and has a capacity of 70 beds. The unit has 3 residential facilities where inmates are accommodated in 27 single, double, triple, four-bedrooms.



**Open unit “Puščava”** is situated approx. 3 kilometers away from the main closed regime prison and has a capacity of 21 beds. The unit operates in a former military building that is now residential building for inmates, which can accommodate inmates in six rooms (single rooms, triple rooms and four-bed rooms). In this unit live unproblematic, tidy inmates who are already in the process of re-socialization (for example going to work on a daily basis etc.) and are benefiting from outside-the-prison facilities and inmates who have been proved to be trustworthy through the verification process.



**Capacity, number of inmates and occupancy of the DOB prison:** on the 31. 1. 2013 there were 552 inmates altogether serving sentence in all departments and regimes of the Dob prison.

	Number of inmates (on 31 January 2013)	Capacity	Occupancy rate
Closed regime (main prison)	478	420	114%
Semi-open unit "Slovenska vas"	57	70	81%
Open unit "Puščava"	17	21	81%

In 2012, the average number of people serving sentence in a closed regime was 445, average occupancy rate was 106%, in the semi-open unit 57 persons (81% occupancy rate), and in the open unit 15 inmates (71% occupancy rate).



**The number and structure of employees:** in the prison, in all departments and units, there are 225 employees. In the closed regime there are 202 employees. With the opening of two new facilities in the closed regime they have minimized the overcrowding problem, unfortunately the number of employees did not increase although the scope of staff (guards, education department staff etc.) work has increased since they directly perform operational tasks in new facilities and work at several locations. Proposal and amendment Act of systematization of jobs and an increase in the number of employees due to the two new facilities was not approved.

**Treatment of inmates:** individual departments are relatively independent organizational units where the majority of professional work with inmates is carried out. Each department/unit has

expert group and a group of judicial officers. Divisional expert group plans and executes individual and group treatments for inmates, which is defined in their personal action plan. Safety supervisory tasks in the department are performed by a group of judicial officers who are with the team leaders directly involved in the work of divisional expert group (collaboration). Inmates can be included in a number of formal and informal education programmes. Those inmates who cannot be joined into the working process due to various reasons, they are involved in occupational therapy. The prison also has three special

programmes: 1) for addiction treatment, 2) treatment for sexual offenders, 3) treatment for inmates with suicidal tendency. In the prison a variety of leisure activities are organized. Special emphasis is put on preparing inmates on their release and cooperation with relevant institutions, in particular the social work centers, employment services, other organizations, businesses, healthcare institutions and others.



**JMW FIRE d.o.o.** is a former public company owned by the state, now private company that operates within the DOB prison, which provides working opportunities for inmates during serving their sentence. Inmates and other people are employed in the company. Inmates from the closed regime have an opportunity to work in JMW Fire where mainly different parts of firefighting equipment are produced.



Besides working in the JMW Fire company, the inmates can also work in the laundry, kitchen, construction and maintenance department of the prison.

Inmates who cannot work due to personal health issues can be included in occupational working therapy, where they produce objects made of different materials, paint etc.



## 2. VISIT TO THE TREBNJE CENTRE FOR EDUCATION AND CULTURE (CIK TREBNJE)

In the afternoon delegates visited The Trebnje Centre for Education and Culture Trebnje where the organization, projects and its work in the prison was presented to them. The guests from Municipality Šentrupert, Employment Service of Slovenia and JMW Fire d.o.o. joined to the discussion carried out during the round table.

**CIK Trebnje** presented mainly those activities, services, good practices and projects, connected to the work inside of the DOB prison:

- **BRIDGE project – Bridging the gap: bi-level tutorial system for imprisoned persons' career growth** has last from 1 October 2010 to 31 October 2012; project partners: Germany, Malta, Norway and Slovenia.
- **National Vocational Qualifications (NVQ):** Slovenia offers a system of national vocational qualifications meaning offering shorter trainings, courses for people without vocational education to be trained for different jobs; CIK Trebnje carries out these programmes inside of the DOB prison for baker and cleaner. Official certificate is given to the learners after successfully finished training.
- **Lifelong learning point – project CVŽU (2008–2013):** different workshops and lectures for inmates were carried out by CIK Trebnje in the DOB prison within this project – **individual learning:** basic computer skills with a tutor (Word, Excel, PowerPoint); **lectures and workshops** (personal growth, responsibility for their own decisions, relations within the family, how can I give myself more personal freedom, where to get help etc.)
- **Learning prison project:** aim of the project isto start the process of creating prisons as learning organizations; duration of the project: 2 years (1. 8. 2013 – 31. 7. 2015), 4 partners from 4 countries: France, Slovenia, Turkey, and United Kingdom.

Representative of **Municipality Šentrupert**, Mrlztok Kovačič, presented the work and activities of the local community with the connection to the DOB prison which is situated there (see PPT).





After the presentations the discussion was open.

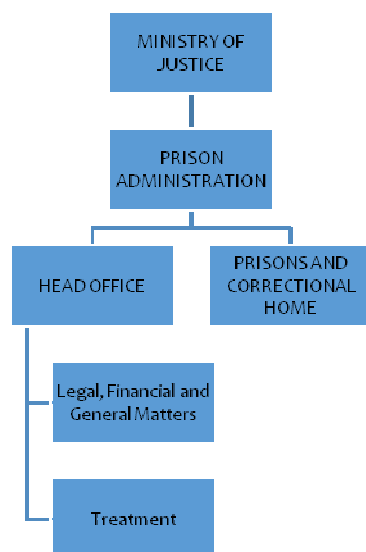
The project group visited the Gallery of naïve artists in Trebnje which operates under CIK Trebnje. Opportunities and previous gallery projects with the DOB prison were presented.

## DAY 2: 1<sup>st</sup> OCTOBER 2014

In the morning session the Criminal Justice System of Slovenia and women prison Ig were presented by Mr Robert Misja and Ms Darja Radić, both workers in the women prison Ig, near Ljubljana.

### CRIMINAL JUSTICE SYSTEM OF SLOVENIA

**PRISON ADMINISTRATION** is an authority within the Ministry of Justice responsible for the prison system in Slovenia. It was established in 1995. Prisons are internal organization units of the Administration.



The Prison Administration is responsible for:

- carrying out of sentences,
- organization and management of prisons and correctional home,
- ensuring financial, material, prison staff, technical and other requirements necessary for the functioning of prisons and correctional home,
- training of prison staff,
- enforcement of prisoners' rights and obligations.

The mission of the prisons: to ensure that the prisons are safe for society, for inmates and employees and that they provide the possibility of re-socialization to inmates.

Prisons administration is led by Director General, who is responsible to the Minister of Justice. Prisons are led by Directors (Governors), who are responsible to the Director General.

In year 2013 in Slovenian prisons there were 842 employees, the budget was 33.423.979 million EUR, 64 EUR inmate cost per day.

The Penal Sanctions Enforcement Act is one of the fundamental laws regulating the enforcement of penal sentences and other measures passed by courts in criminal proceedings. The most

important implementing regulations are: the Rules on Prison Sentence Enforcement, the Rules on Detention Enforcement, the Rules on the Enforcement of the Correctional Measure of committing a

Juvenile to a Correctional Home, Prison rules. Slovenian legislation is in general harmonized with Council of Europe recommendations. In its report, the European Commission has stated that Slovenian prisons in general meet international standards and has only called attention to the problem of overcrowding.

PRISON sentence in Slovenia: minimum 15 days, maximum 30 years; life sentence in case of genocide, terrorism, multiple murders (since 2008).

Slovenia has 6 prisons on 14 different locations:

The central prisons are:

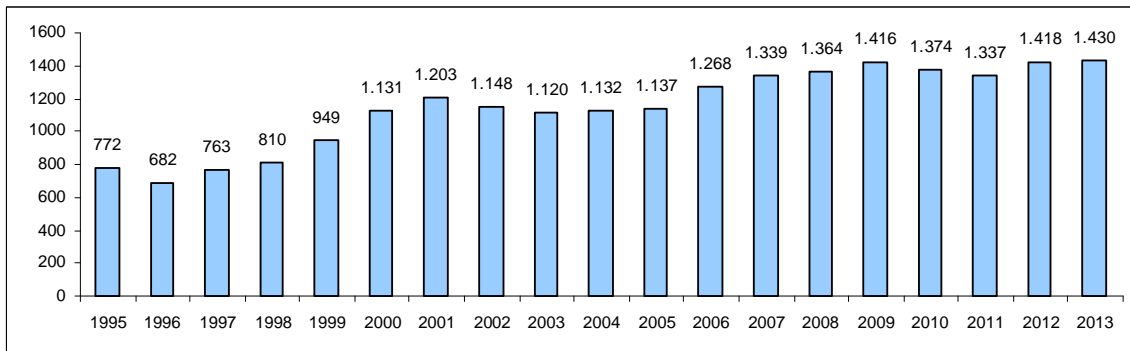
- for women in Ig (longer than 2 months)
- for men in Dob (longer than 18 months)
- for juveniles and young adults in Celje

The regional prisons are:

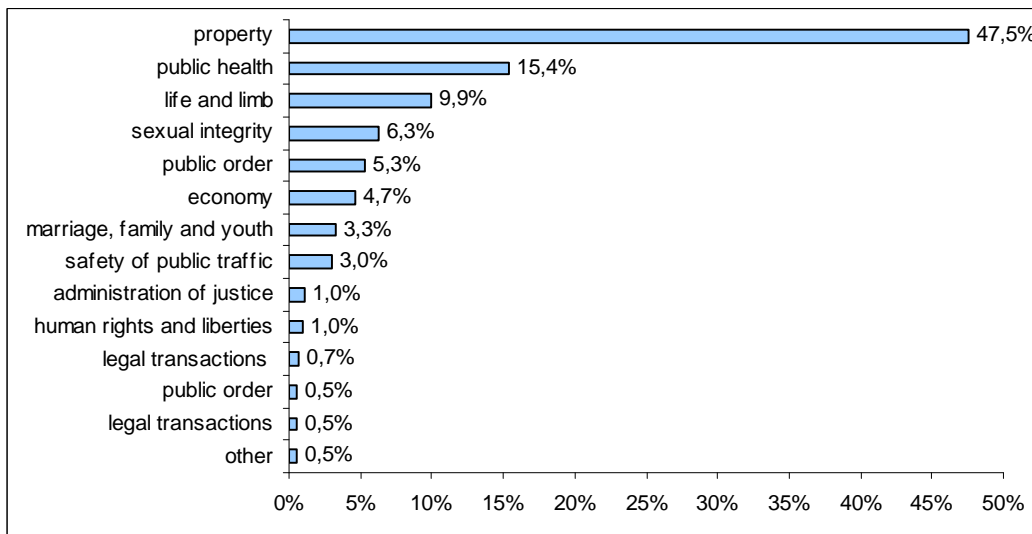
- in Koper, Maribor and Ljubljana (up to 18 months)
- dislocated departments (up to 6 months)

The detention departments are organized on 8 locations. The Correctional Home also functions within the framework of the Administration (in Radeče).

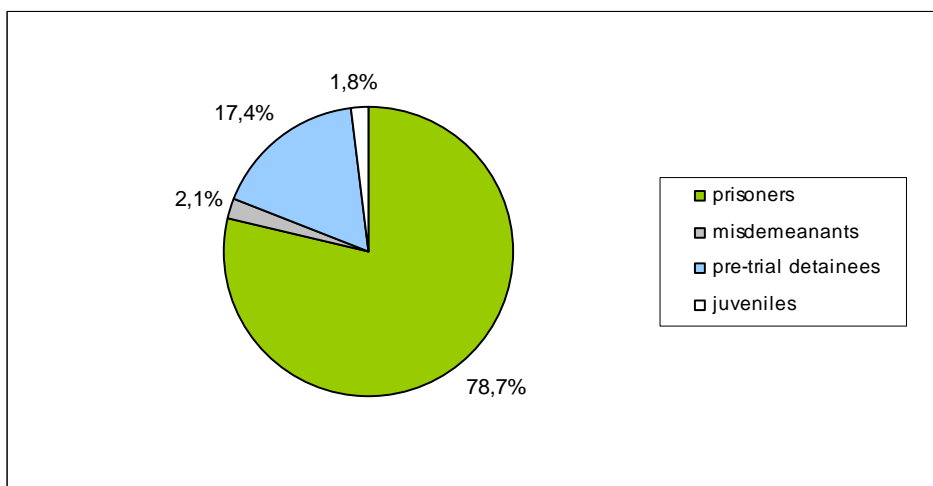
**AVERAGE NUMBER OF INMATES FROM 1995-2013**



**SHARE OF PRISONERS BY MAIN OFFENCE IN 2013**



**AVERAGE STRUCTURE(CATEGORIES) OF INMATES 2013**



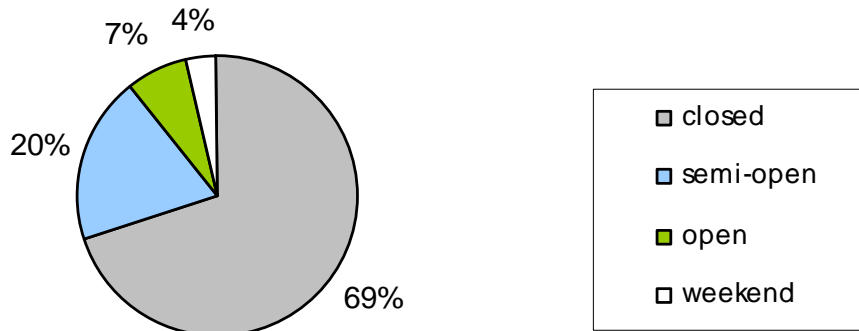
**THE TERM OF SENTENCE:** the minimum 1 month, the largest sentence 30 years, 80 % admissions are up to 2 years sentence, 13 prisoners with 30 years sentence.

**AGE STRUCTURE OF PRISONERS 2013:** 64% less than 39 years, 47% from 27 to 39 years, 13% from 23 to 27 years, 4% from 18 to 23 years.

**GENDER, FOREIGNERS, DRUG ADDICTED PRISONERS:** 95% male, 12% foreigners, 30% drug addicted prisoners.

Each prison has closed, semi-open and open unit. They differ according to the level of security and the limitation of freedom of movement.

**CLASSIFICATION OF PRISONERS BY REGIME ON 1.1.2013**

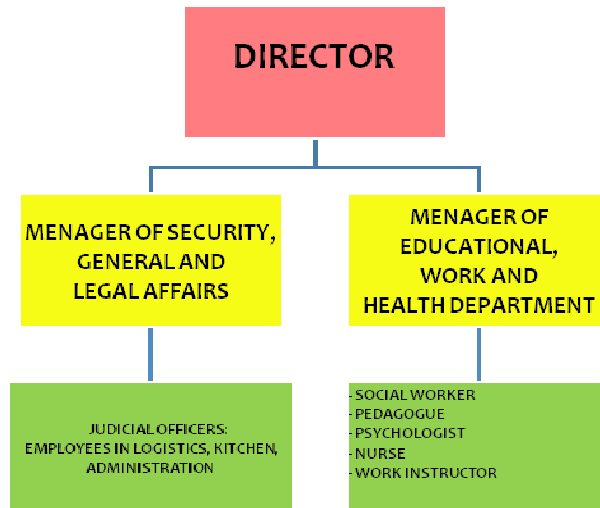


**EDUCATION:** From all prisoners in 2013, 23% are included in the formal educational programmes for adults. Most of them in basic education, short term vocational education and secondary vocational education. 90 % of prisoners attended educational programmes within the prisons. Most frequent Formal education programmes: cook, waiter, hotel management and tourist technician.

**WOMENS PRISON IG**

Ig is the central women's prison – the only one in Slovenia. The prison is the part of The Prison Administration of the Republic of Slovenia. It is a public institution – financed from state budget. The prison execute imprisonment (capacity 65), remand (capacity 18), and compliance detention – new institute since 2008 (capacity 3). Prison capacity all together is 86 inmates. Prison's full capacity has never been occupied in the past.

Organigram of the prison:



**INMATES:** minors and adults (in last years: 0 minors), age at the moment (the youngest one: 20; the oldest one: 81; the most aged between 27 and 39). Most frequent crimes: offences against property (theft, robbery, fraud, etc.), criminal offences against life and body (violent behavior, murder, sexual offences, etc.), and offences against public order. Duration of sentences at the moment: the shortest one 4 months, the longest one 20 years, at the moment mainly between 1 and 2 years. Some of them have drug or alcohol addiction problems.

**TREATMENT:** individual and group treatment → in the last few years inmates practice more individual treatment. Group treatment: living together with each other, small groups with counselor. individual programme of treatment: establishes the ways of cooperation between inmates and prison staff, defines a form of sentence serving, establishes the ways of engaging in activities, defines cooperation between prison and external institutions, defines cooperation between inmate and her family, participation in special treatment (drug and alcohol abuse).

**A MOTHER INMATE:** inmate who gets pregnant during their time or have given birth adequate health care, suitable conditions for nursing infants is offered. Mother is allowed to keep her baby until the baby is 1 year old; after that – baby is given to father or relatives. Exception: mothers can keep the baby until 2 years of age – if mother will serve the sentence, if there are any special health, social or other reasons, the decision is taken by the General Director of Prison Administration. The raising question is if it is a prison a good place to raise a child. There is also a problem with providing single room, supplies for nursery, etc. for mother inmates. 2/3 of inmates are mothers, 1/2 have minor children.

For more information about Ig prison for women and Criminal Justice System of Slovenia please see attached PPTs.



After both presentations the round table with discussion and questions took place. After that the project management meeting was implemented and partners agreed on the following future actions to be performed up to the next meeting, to be held in Romania at the beginning of March 2015.

## FUTURE ACTIONS:

WHAT	WHO	BY
Send the <b>questionnaire</b> for meeting evaluation to all partners, asking them to fill it in	Consulmarc Sviluppo	06/10/2014
<b>Return the evaluation questionnaire</b> to Consulmarc sviluppo, duly filled in	All Partners	15/10/2014
Write the <b>report</b> of the project meeting and send it to all project partners	CIK Trebnje	30/11/2014
Write the <b>4<sup>th</sup> issue of the project newsletter</b> and send it to all partners	CIK Trebnje	30/11/2014
Prepare a <b>short report of the discussion held during the last part of the meeting</b> , on the conclusions which can be extracted from the meeting workshop.  The report will identify which skills, knowledge and attitude prison trainers would need to develop, to better know their local territory and establish relations with local stakeholders to promote inmates employment.  These information will be used to progress with the definition of the "Framework of Competencies" table.	Consulmarc Sviluppo	31/10/2014
<b>Select one good practice</b> presented during the meeting and describe it using the <b>standard table describing best practices</b> (the same which was used in past meetings).  The description will identify which skills, knowledge and attitude prison trainers would need to develop, to better know their local territory and establish relations with local stakeholders to promote inmates employment.  These information will be used to progress with the definition of the "Framework of Competencies" table.	CIK Trebnje	30/11/2014
Send comments to Consulmarc Sviluppo Srl on the final guidelines draft: <ul style="list-style-type: none"> <li>- which sections of the documents should be added</li> <li>- what can be the contribution of each partner in completing them</li> <li>- any other suggestions to improve/complete the document</li> </ul>	All Partners	31/10/2014
Communicate to the Centre d'Iniciatives per a la Reinserció (CIRE) – Spanish partner the number of rooms to be booked for the 7° FREE-IT project meeting in Barcelona which will be held from the 11/05/2014 to the 14/05/2014.	All Partners	31/10/2014